

Case Study – Vehicle Access



Client: Waitrose Supermarket, Surbiton, Surrey

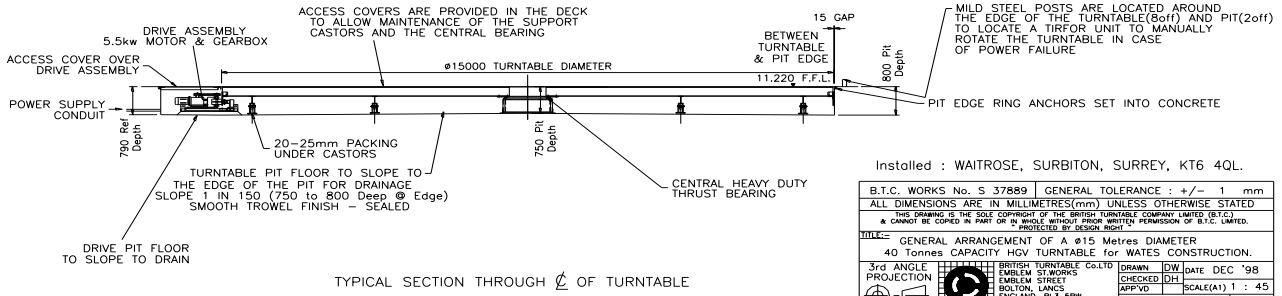
Synopsis: With the Waitrose store having a town centre location and restricted basement space for vehicle deliveries, **Movetech UK** was contracted by Wates Construction to design and install a vehicle revolve to accommodate fully laden articulated heavy goods vehicles, therefore remodelling the delivery process.

Designed to rotate at a controlled fixed speed in either direction, this 15-metre diameter, 40 tonne capacity turntable enables delivery vehicles to be unloaded quickly and safely, therefore creating the added benefits of less on-site stock, and maximisation of in-store retail space.

Entering via a ramp from the main road, the turntable allows vehicles to manoeuvre easily in a restricted space and move into the ideal position in only 60 seconds.

British Turntable has installed vehicle access turntables at a number of Crown Courts, including Cardiff and Croydon, where speed of access and security have been principal factors.

Turntable Specification



Construction: Steel universal beam construction of pre-fabricated sections

Diameter: 15 metre **Capacity:** 40 tonnes

Height: 750-800mm sloped **Speed:** 0.6 rpm

Motor: Synchronous, 3ph, 5.5 kW

Control: 'Dead man' push-button control box operation. Mounted on adjacent wall, fixed speed, forward/reverse, operable by store personnel.

Drive: Friction wheel peripheral drive

Features: Wall mounted control with security key only access. Flashing beacons used as a visual warning to advise personnel of rotating turntable. Manual winching bolts fitted to act as anchor points for emergency manual operation. 2 off Remote Emergency stop buttons also provided on the wall around the turntable. Yellow markers provided on turntable to guide drivers into position.

Finish: All steelwork zinc metal sprayed and sealed for corrosion protection.