

Case Study – Vehicle Access



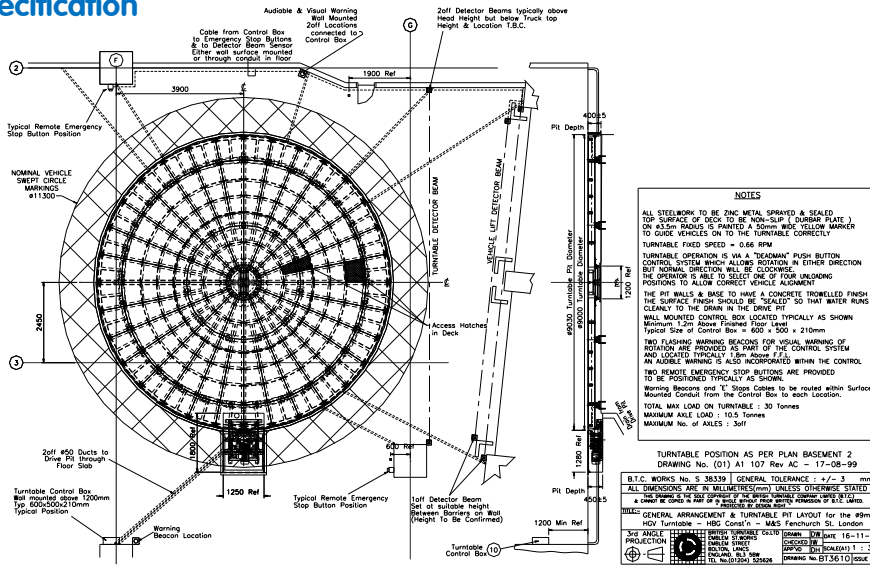
Client: HBG Construction for M&S Store, Fenchurch Street, London

Synopsis: Store deliveries at one of Marks and Spencer's flagship stores in Fenchurch St, London, are now efficiently designed around a 9-metre diameter, 28 tonne capacity, HGV turntable.

Movetech UK designed and installed the turntable in the confined basement to hasten the delivery process. The turntable allows safe vehicle access via 2 service lifts. Eliminating the need for vehicles to make multi-point turns and manoeuvres in restricted loading bay areas, the turntable was designed with safety being of increased importance. Detector beams monitor the service lifts and turntable to ensure that there can be no interference between vehicles, lifts and the turntable. A positioning system automatically aligns the turntable with four pre-set positions increasing the speed of the unloading process while maximising in-store sales area through quick and safe unloading of delivery vehicles.

Also supplied to this basement facility is a powered trolley, which is designed for moving a waste compactor in a linear direction for unloading/loading purposes, thus freeing up the floor area.

Turntable Specification



Construction: All steel construction, universal beam for main arms

Diameter: 9 metre **Capacity:** 28 tonnes

Height: 400mm **Speed:** 0.6 rpm

Motor: Synchronous, 3ph, 4kW, explosion proof

Control: ‘Dead man’ operation for forward/reverse control at fixed speed. Emergency stop button also included on control box. Encoder ensures positional control to allow the operator to automatically rotate to one of four positions. Detector beams across access lifts and near the turntable ensure safety during rotation and in the detection of vehicles entering the basement area. The turntable will only rotate when this beam is clear. Flashing beacons and audible klaxons warn of rotation.

Drive: Edge friction drive with emergency manual facility

Features: All steelwork is zinc metal sprayed and sealed for corrosion protection. In the event of turntable power failure, a manual winch is provided to enable manual rotation. A yellow marker is painted around the edge of the turntable perimeter, to give indications of maximum vehicle overhang.